



# Weekly Hotel Performance Update - Week of November 1-7, 2020

source: STR, Inc.

## San Diego County Hotel Performance - Week of Nov 1-7, 2020

Region	% Occupancy	ADR	RevPAR
San Diego County	42.1%	\$115	\$48
San Diego City Properties	36.8%	\$116	\$43
Downtown	27.4%	\$133	\$37
Mission Bay	34.6%	\$158	\$55
Pt. Loma - Airport	40.8%	\$105	\$43
Mission Valley	43.1%	\$88	\$38
La Jolla Coastal	34.3%	\$207	\$71
UTC	36.4%	\$119	\$43
I-15 Corridor	46.1%	\$112	\$52
Del Mar/Oceanside	44.7%	\$126	\$56
Northeast/Escondido	56.5%	\$96	\$54
South/East County	67.2%	\$90	\$60

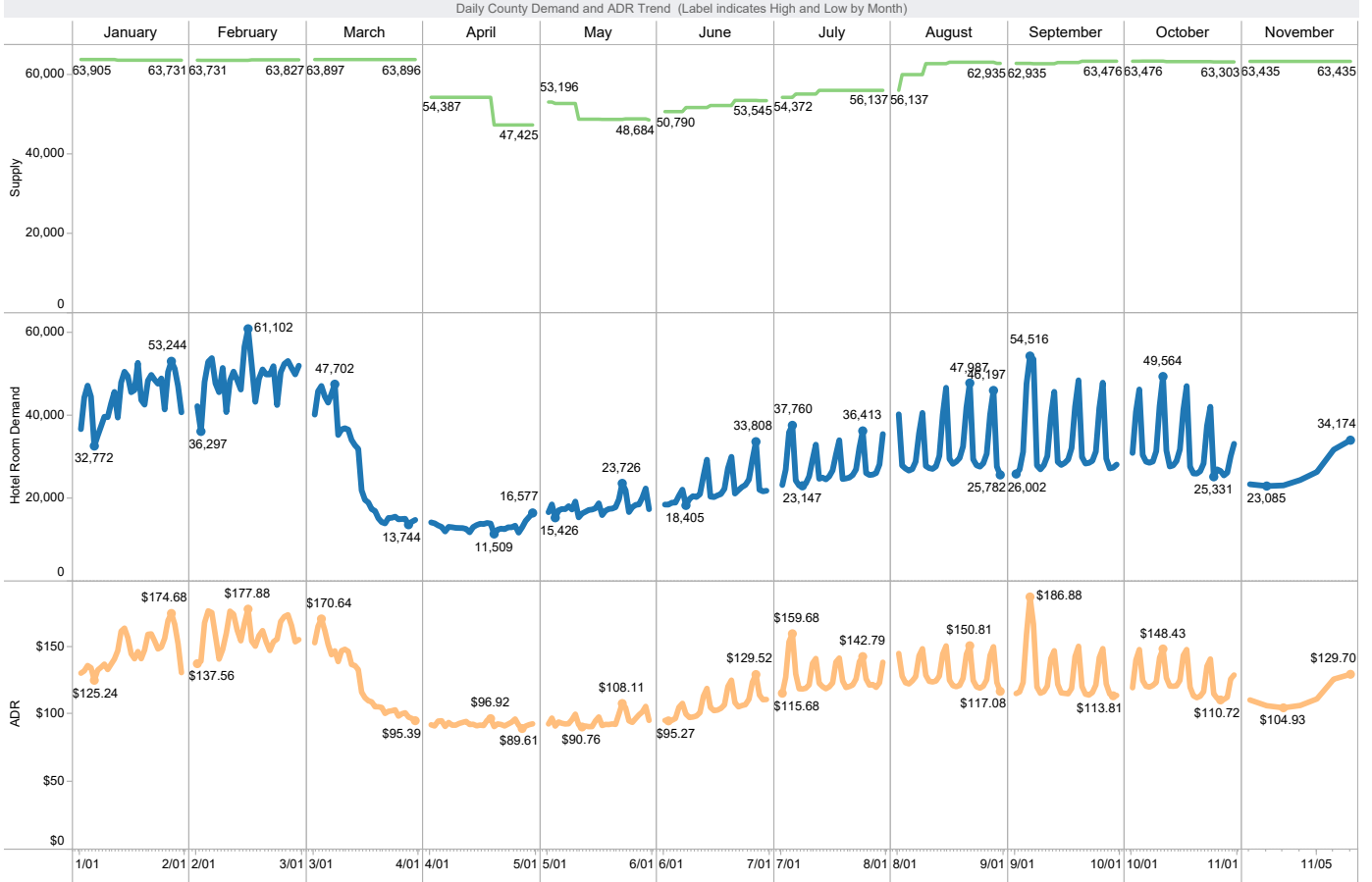
Weekly Top 25 Hotel Occupancy Nov 1-7, 2020	
Phoenix	55.1%
New Orleans	53.9%
Norfolk/Virginia Beach	49.4%
Atlanta	49.0%
Tampa/St Petersburg	48.6%
Philadelphia	47.9%
Los Angeles/Long Bea..	46.2%
Detroit	43.9%
San Diego	42.1%
Miami/Hialeah	41.2%
Dallas	40.8%
Houston	40.4%
Nashville	39.2%
Denver	39.1%
Anaheim/Santa Ana	38.8%
St Louis	37.5%
New York	36.0%
San Francisco	35.7%
Washington	35.2%
Seattle	34.3%
Orlando	31.9%
Boston	30.3%
Chicago	30.1%
Minneapolis/St Paul	30.0%
Oahu Island	24.0%

Weekly Top 25 ADR Nov 1-7, 2020	
Oahu Island	\$161
New York	\$133
Miami/Hialeah	\$128
Los Angeles/Long Bea..	\$124
San Francisco	\$119
San Diego	\$115
Anaheim/Santa Ana	\$114
Phoenix	\$108
New Orleans	\$105
Boston	\$102
Washington	\$100
Tampa/St Petersburg	\$97
Philadelphia	\$95
Nashville	\$94
Seattle	\$89
Orlando	\$84
Denver	\$83
Chicago	\$80
St Louis	\$80
Detroit	\$80
Atlanta	\$79
Minneapolis/St Paul	\$78
Norfolk/Virginia Beach	\$78
Dallas	\$75
Houston	\$74

Weekly Top 25 RevPAR Nov 1-7, 2020	
Phoenix	\$59
Los Angeles/Long Bea..	\$57
New Orleans	\$57
Miami/Hialeah	\$53
San Diego	\$48
New York	\$48
Tampa/St Petersburg	\$47
Philadelphia	\$45
Anaheim/Santa Ana	\$44
San Francisco	\$43
Oahu Island	\$39
Atlanta	\$39
Norfolk/Virginia Beach	\$38
Nashville	\$37
Washington	\$35
Detroit	\$35
Denver	\$32
Boston	\$31
Seattle	\$31
Dallas	\$31
Houston	\$30
St Louis	\$30
Orlando	\$27
Chicago	\$24
Minneapolis/St Paul	\$23



San Diego County Demand and Average Rate Daily Trend  
 January 1, 2020 through November 7, 2020  
 Source: STR, inc





Last Week's Daily Hotel Performance by Region  
Source: STR, Inc.

		Sun, November 01	Mon, November 02	Tue, November 03	Wed, November 04	Thu, November 05	Fri, November 06	Sat, November 07
San Diego City Properties	Rooms Sold	13,473	12,767	12,650	13,452	14,924	18,838	20,251
	% Occupancy	32.7%	31.0%	30.7%	32.6%	36.2%	45.7%	49.1%
	ADR	\$112.66	\$108.41	\$106.92	\$108.00	\$112.00	\$125.96	\$130.23
	RevPAR	\$36.80	\$33.56	\$32.79	\$35.23	\$40.53	\$57.53	\$63.94
Downtown	Rooms Sold	3,303	2,811	2,794	3,014	3,477	5,508	6,350
	% Occupancy	23.3%	19.8%	19.7%	21.2%	24.5%	38.8%	44.7%
	ADR	\$132.02	\$126.49	\$123.88	\$122.64	\$127.19	\$138.18	\$144.96
	RevPAR	\$30.70	\$25.04	\$24.37	\$26.03	\$31.14	\$53.59	\$64.81
Mission Valley	Rooms Sold	3,609	3,658	3,571	3,677	3,894	4,191	4,362
	% Occupancy	40.4%	40.9%	40.0%	41.2%	43.6%	46.9%	48.8%
	ADR	\$87.47	\$85.07	\$86.62	\$85.98	\$86.97	\$91.88	\$93.51
	RevPAR	\$35.34	\$34.84	\$34.63	\$35.39	\$37.91	\$43.10	\$45.66
Pt. Loma - Airport	Rooms Sold	1,953	1,840	1,803	1,939	2,038	2,457	2,506
	% Occupancy	38.4%	36.2%	35.5%	38.1%	40.1%	48.3%	49.3%
	ADR	\$99.16	\$98.83	\$98.35	\$100.08	\$100.69	\$115.48	\$116.45
	RevPAR	\$38.08	\$35.76	\$34.87	\$38.16	\$40.36	\$55.80	\$57.39
Mission Bay	Rooms Sold	1,021	814	797	862	1,048	1,575	1,734
	% Occupancy	31.5%	25.1%	24.6%	26.6%	32.3%	48.5%	53.4%
	ADR	\$144.11	\$133.65	\$128.98	\$132.07	\$146.85	\$184.33	\$188.52
	RevPAR	\$45.34	\$33.53	\$31.68	\$35.08	\$47.43	\$89.47	\$100.74
La Jolla Coastal	Rooms Sold	582	492	480	517	629	829	905
	% Occupancy	31.5%	26.6%	26.0%	28.0%	34.0%	44.8%	48.9%
	ADR	\$197.59	\$195.96	\$194.33	\$189.11	\$202.24	\$223.21	\$225.10
	RevPAR	\$62.19	\$52.14	\$50.45	\$52.88	\$68.80	\$100.08	\$110.17
UTC	Rooms Sold	1,281	1,310	1,333	1,453	1,623	1,790	1,811
	% Occupancy	30.8%	31.5%	32.1%	35.0%	39.1%	43.1%	43.6%
	ADR	\$120.57	\$120.60	\$114.54	\$116.91	\$116.67	\$121.31	\$121.65
	RevPAR	\$37.16	\$38.02	\$36.74	\$40.87	\$45.56	\$52.25	\$53.01
I-15 Corridor	Rooms Sold	706	763	740	915	1,087	1,353	1,449
	% Occupancy	32.5%	35.1%	34.0%	42.1%	50.0%	62.2%	66.6%
	ADR	\$103.42	\$108.16	\$104.04	\$112.92	\$113.23	\$115.88	\$116.22
	RevPAR	\$33.57	\$37.94	\$35.40	\$47.50	\$56.59	\$72.09	\$77.43
Del Mar/Oceanside	Rooms Sold	2,369	2,376	2,485	2,762	2,884	3,364	3,557
	% Occupancy	37.4%	37.6%	39.3%	43.7%	45.6%	53.2%	56.2%
	ADR	\$119.61	\$115.35	\$111.66	\$112.53	\$125.67	\$142.33	\$141.91
	RevPAR	\$44.79	\$43.32	\$43.86	\$49.13	\$57.29	\$75.69	\$79.80
South/East County	Rooms Sold	4,200	4,461	4,653	4,650	4,736	4,756	4,901
	% Occupancy	61.0%	64.8%	67.6%	67.6%	68.8%	69.1%	71.2%
	ADR	\$87.32	\$88.50	\$88.01	\$88.26	\$88.11	\$91.98	\$93.89
	RevPAR	\$53.30	\$57.38	\$59.52	\$59.65	\$60.65	\$63.59	\$66.88
Northeast/Escondido	Rooms Sold	2,158	2,304	2,351	2,432	2,519	2,939	3,135
	% Occupancy	47.8%	51.1%	52.1%	53.9%	55.9%	65.2%	69.5%
	ADR	\$93.18	\$90.65	\$88.98	\$91.54	\$92.46	\$101.61	\$106.40
	RevPAR	\$44.58	\$46.31	\$46.38	\$49.36	\$51.64	\$66.22	\$73.96



Day of Week Occupancy Patterns By Region  
 Week of November 1-7, 2020  
 Weekly min & max noted

